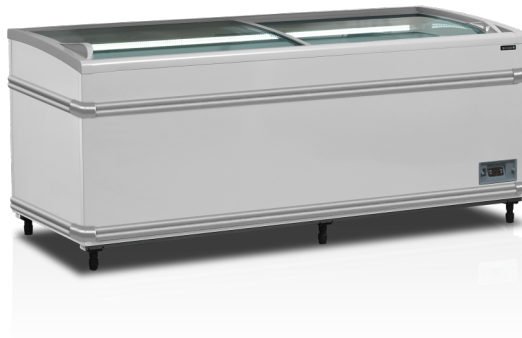


## SFI185 HC-CF VS

Supermarket Cooler / Freezer

### Product Features

- Easily switchable between cooler and freezer
- Energy saving variable speed compressor
- Excellent product visibility
- Sliding curved lids
- Ideal in combination with our top section MTF
- Adjustable false base
- LED interior light
- Bumper bars
- Union kit for island creation is available as option



Digital controller



Bumper bars

### Supermarket head case for creating wonderful island displays

This head case is a part of the SFI range and is perfect for creating island displays in supermarkets, grocery stores, pet food stores etc. The curved glass sliding lids allow full visibility of the products inside. The energy efficient LED interior lighting on the back wall of the unit, illuminates the products beautifully.

The variable speed compressor ensures that the unit only regulates the temperature when needed. This makes it app. 20% more energy efficient compared to the same model without a variable speed compressor – and thereby more cost efficient to operate.

The SFI range also comes as a freezer option as well as in several colors - contact our sales team for more information.

Design and Material		Measures and Content		Power and Consumption	
Lid No & Type	2 curved sliding glass lids	Total Display Area	m <sup>2</sup> 1,25	Energy Class	C
Basket No & Type		Temperature Range	°C -24 to -18 / -1 to +8	Energy Consumption	k 4,31
Divider System	Yes	Climate Class	4	Annual Energy Cons.	kWh/year 1573,15
Number of dividers	pcs 4	Gross / Net Weight	kg 165 / 150	Power	1
Feet / Legs	6 adjustable legs	Gross / Net Volume	l 786 / 500	Max Ambient	30°C 55% RH
Exterior Finish	White	Cooling and Functions		Input Power	W 890
Interior Finish	White painted steel	Type of Controller	Electronic	Voltage / Frequency	V/Hz 220-240/50
Interior Light	LED Horizontal	Type of Cooling	Static	Noise Level	dB(A) 48
		Type of Defrost	Automatic, hot gas	Dimensions	
		Refrigerant	R290	Internal Dimension (WxDxH)	mm 1720 x 720 x 627
		Refrigerant Charge	g 110	External Dimension (WxDxH)	mm 1856 x 858 x 832
		Thermometer	Yes	Packed Dimension (WxDxH)	mm 1920 x 915 x 920
				40ft Container Load	pcs 26